

**CELLPHONE WI-FI JAMMER
WITH FREQUENCY SETTING**

SJ-004G

User Manual

Attention!
Read this Manual before using the Jammer.

Contents

Introduction.....	3
Specifications	4
Safety	6
Nomenclature	7
Getting Started	8
Charging the Battery	8
Discharge of Battery	8
Basic operation.....	9
Activation the jammer.....	9
Deactivation the jammer	9
Frequency setting	10
Preparation	10
Control program.....	12
Get SJ-004G Settings.....	13
Change of settings.....	14

Introduction

This jammer is a device that prevents the operation of cellphones, Wi-Fi and Bluetooth devices by radiating noise interference.

It will help you protect yourself from the threat of eavesdropping via cell phone (even when cellphone is switched off can listen to conversations at a distance of several meters) or via Wi-Fi or Bluetooth devices. In addition, this mobile device helps prevent disturbances or noise from cellular phone calls at short distances.

The jammer has 3 separate channels designed to operate in **GSM-850/ CDMA-850** or **GSM-900** (first channel) and **DCS-1800** or **PCS-1900/ CDMA-1900/ WCDMA-1900** or **WCDMA-2100** (second channel) and **PCS-1900/ CDMA-1900/ WCDMA-1900** or **WCDMA-2100** or **Wi-Fi/ Bluetooth** (third channel).

The user can reprogram the jammer for any combination of these standards.

Specifications

Numbers of jamming channels:	3
TX frequency of channel 1:	800 ~ 1000 MHz
TX frequency of channel 2:	1799 ~ 2176 MHz
TX frequency of channel 2:	1924 ~ 2492 MHz
Total output power:	0.9W (3 x 0.3W)
Cover Standards Channel 1:	GSM-850/ CDMA-850 or GSM-900
Cover Standards Channel 2:	DCS-1800 or PCS-1900/ CDMA-1900/ WCDMA-1900 or WCDMA-2100 (3G)
Cover Standards Channel 3:	PCS-1900/ CDMA-1900/ WCDMA-1900 or WCDMA-2100 (3G) or Wi-Fi/ Bluetooth
Jamming range:	up to 8 meters (the signal must $\leq 85\text{dBm}$ in the location)
Continue using time:	45 min (3 channels are working)
Battery:	3.6V 1800mAh (Li-Polymer cell)
Charger:	100-240VAC 50-60Hz / 5VDC 0.5A or PC USB
Dimensions:	105 x 70 x 25 mm
Weight:	125 g
Operation temperature:	-10...+55°C

Features

- ❖ Portable compact handheld design
- ❖ Designed for personal use
- ❖ It doesn't look like a regular jammer
- ❖ Built-in antennas
- ❖ The Jammer can be tuned to specific frequencies
- ❖ Frequency setting of the Jammer by PC
- ❖ Built-in working & recharge condition indicators
- ❖ Built-in high capacity rechargeable battery
- ❖ Universal charging from PC USB or from a charger
- ❖ 3 separate channels

Safety

Medical equipment. Do not use the jammer in a hospital because it can interfere medical devices operation. Do not use the jammer too close to personal medical devices, such as pacemakers and hearing aids.

Aircraft. Never use the jammer in an aircraft. It may be dangerous.

Blasting areas. Do not use the jammer in any area with a potentially explosive atmosphere such as refueling points, fuel depots, chemical plants or areas where blasting operations are in progress. The functioning of the jammer in such areas may interfere to operation of a technical installation. It may cause an explosion or fire.

Power supply. This device is intended be recharged only with the original charger or charging from a USB port. Other usage will invalidate any warranty given to this device and may be dangerous. The main voltage specified on the power supply unit must not be exceeded. To reduce risk of damage to electric cord, remove from outlet or from the jammer by holding connector rather than cord.

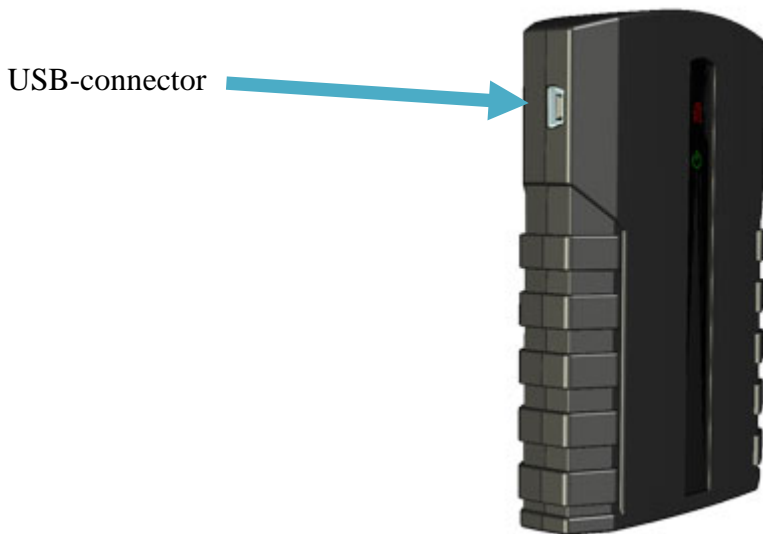
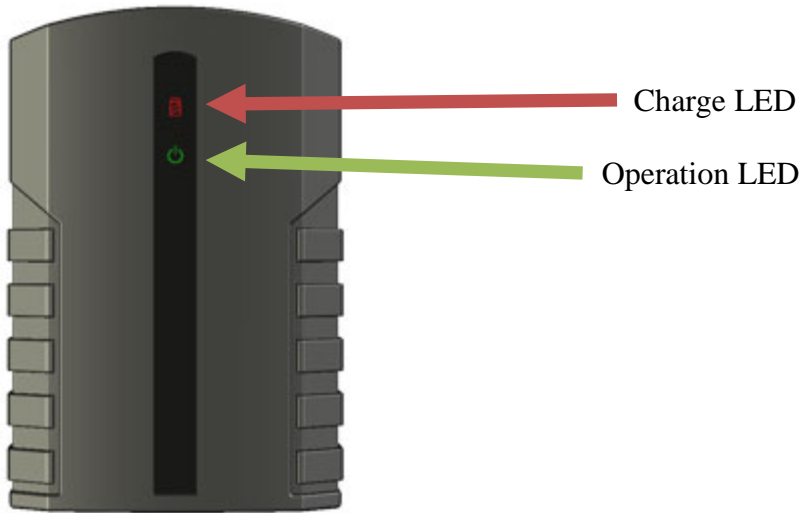
Electronic devices. The jammer can interfere with the operation of nearby electronic devices such as TVs, radios or PCs.

Battery. Never expose the battery to extreme temperatures (in excess of 60°C). Use only original battery and charger. You can risk damage to the product and your health.

Heating up. The device heats up when used for long periods (more than 30 minutes). This is normal and not dangerous.

Children. Keep away from children. Do not allow children to play with jammer. It is not a toy.

Nomenclature



Getting Started

Charging the Battery

Before using jammer for the first time, charge the battery fully. Insert the charging cable into the charger on the left side of the jammer. Plug the other end to PC USB-connector or adaptor. The red light on the jammer case indicates it is functioning.

For optimum performance, charge the battery a minimum of 5 hours on the first charge. For reliable and long time performance, the battery must be fully charged and then emptied at least three times when new.

Charging time of empty battery is about 4 hours. When the battery is fully charged, the red light will be off. The fully charged battery supports to 45 minutes of operation time when using three channels. If using one or two channels, the operation time will be longer.

Discharge of Battery

When the jammer is in the low voltage, the red light will start blinking 15 minutes before the battery becomes fully exhausted.

*Notes: 1. The charger will heat up when used for long period.
This is normal and not dangerous.*

2. If you charge the jammer from PC USB-port do not forget that the charge will be interrupted when PC will be turned off.

Basic operation

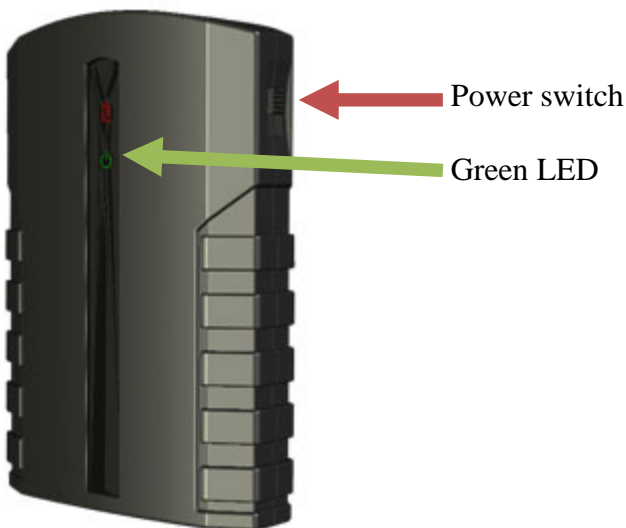
Activation the jammer

Shift the power switch up to activate the jammer. The green LED on the front of the jammer must blink every 3 second during operation.

For getting of the best performance, it is recommended to set up the jammer vertically.

Deactivation the jammer

Shift the power switch down to deactivate / turn off the jammer.



*Note: The jammer will heat up when used for long period.
This is normal and not dangerous.*

Frequency setting

This Jammer has three separate channels. It is possible to tune these channels to other frequencies. The jammer's firmware has several presets. The user can select desired presets to change frequency bands of the jammer or even use own settings.

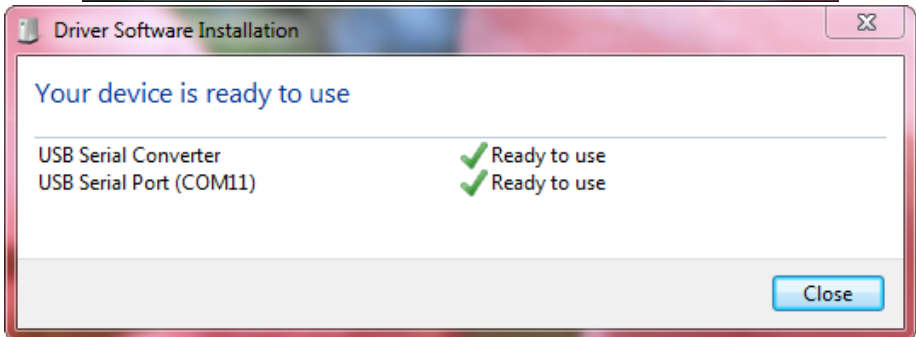
Preparation

1. At first, it is necessary to download this driver from <http://www.ftdichip.com/Drivers/VCP.htm> .
2. Then connect the **switched off** jammer to PC via the USB-to-mini-USB cable. You will see below message -

Messages in Windows XP must be like as on pictures below:



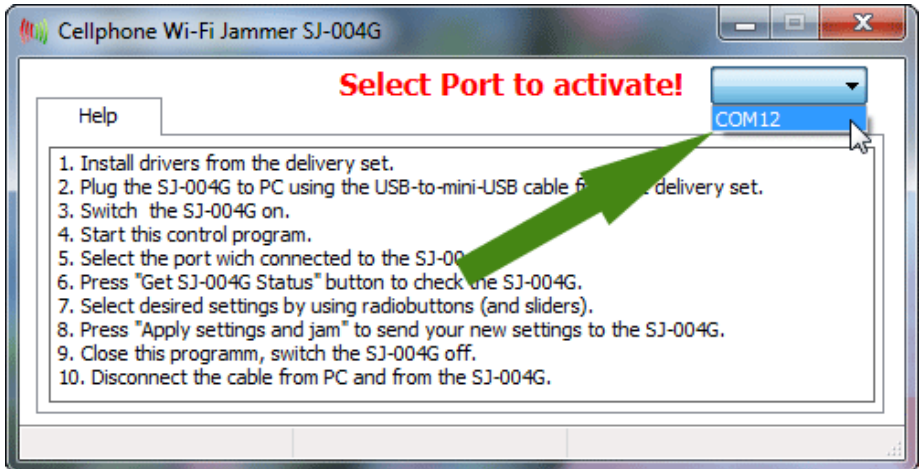
Messages in Windows 7 must be like as on pictures below:



3. Then **switch** the SJ-004G **on**.

Control program

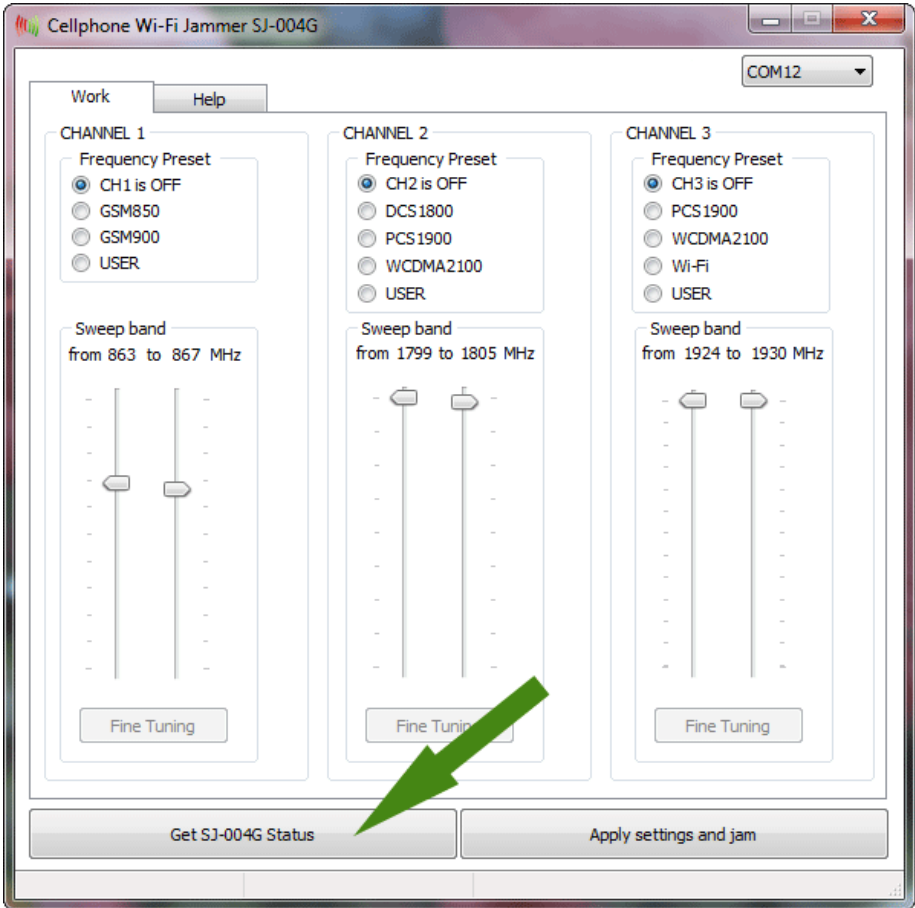
Start the control program to change jammer's settings. A start window will appear. Select the port, which connected to the SJ-004G from the list box at this window. If there is not any SJ-004G connected to the PC, this list will be empty.



The main window of the control program will appear after port chosen.

Get SJ-004G Settings

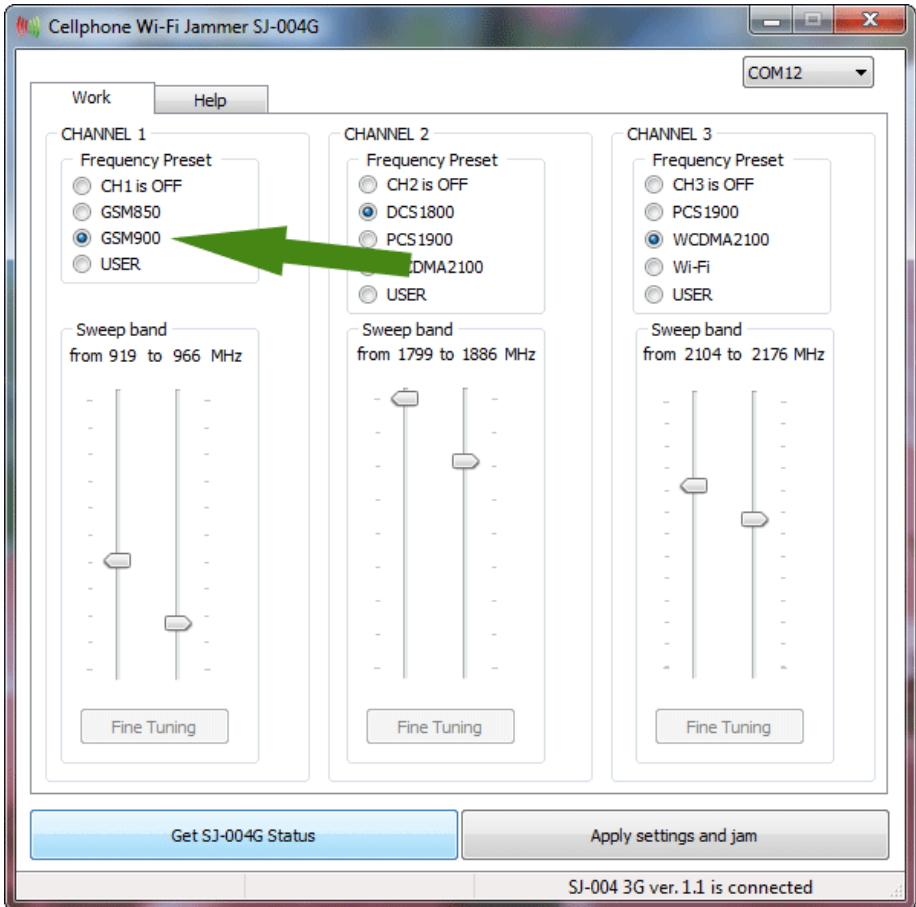
Click **“Get SJ-004G Status”** button to get current settings of the jammer. The Green LED will change blinking mode to 2 short blinkings in 1 second. It is displaying a link with PC.



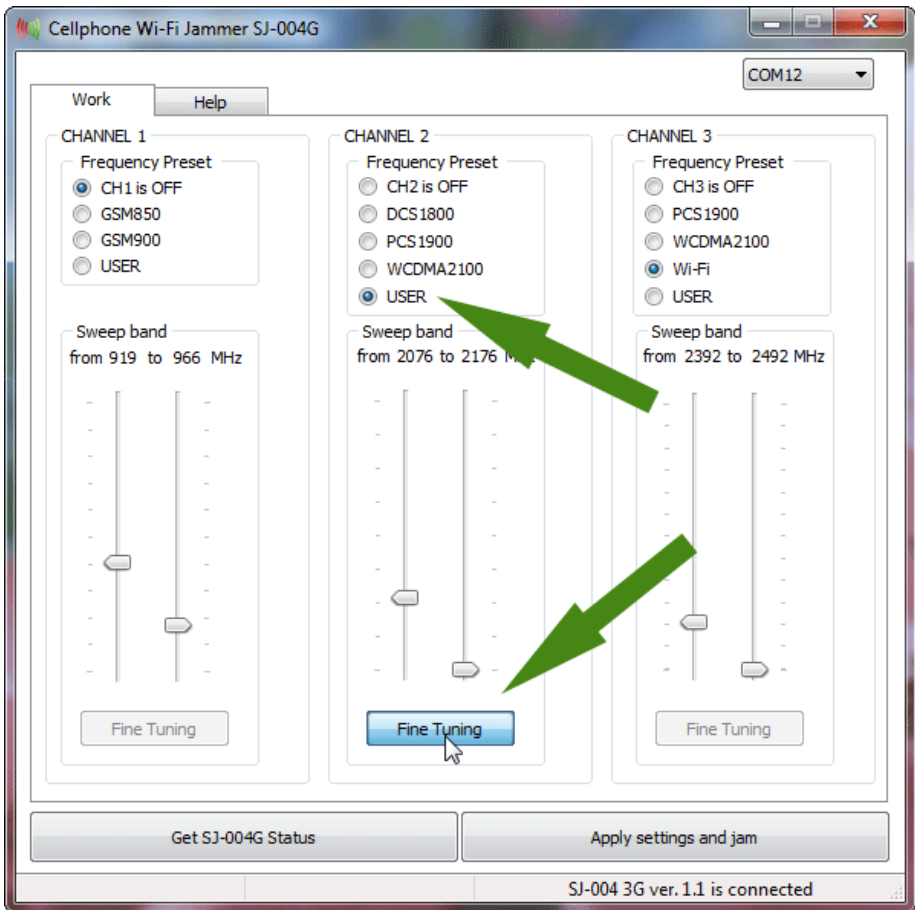
Change of settings

There are two ways to change frequency settings:

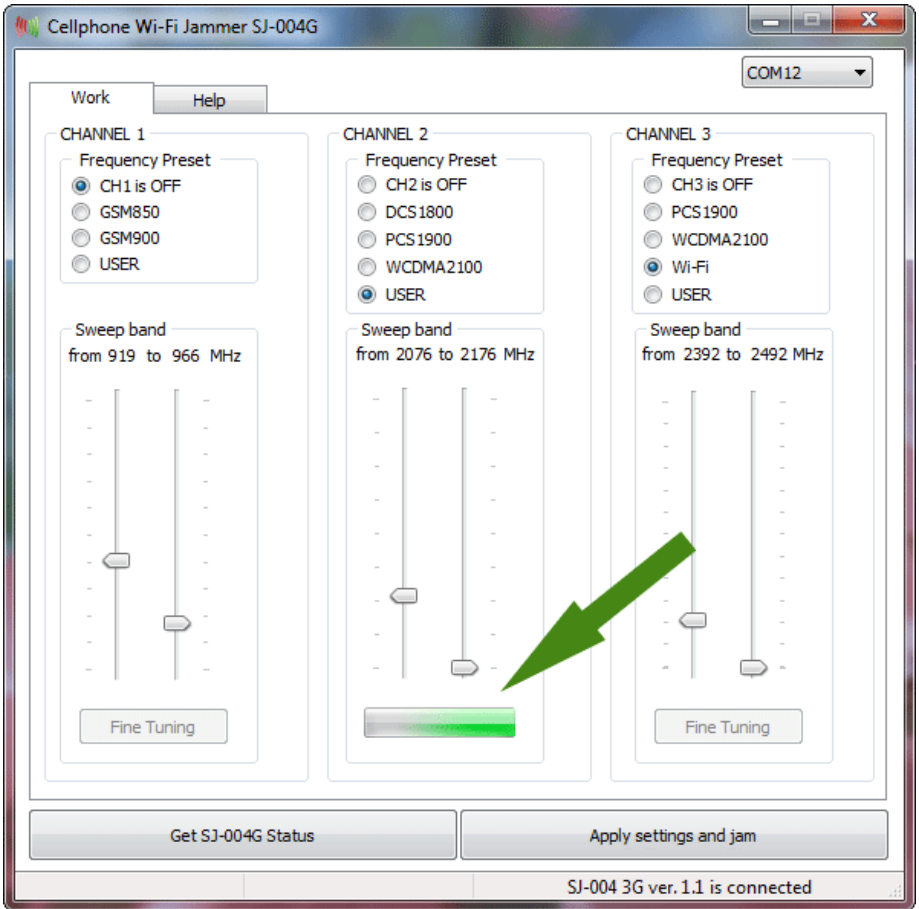
1. By using factory presets.
 - 1.1 Select desired settings by using radiobuttons in appropriate channel.
 - 1.2 Click **“Apply settings and jam”** button.



2. By using users preset.
 - 2.1 Select the **“USER”** preset by using radiobuttons in appropriate channel. The button **“Fine Tuning”** will become enabled.
 - 2.2 Select desired sweep band by using sliders.
 - 2.3 Click the **“Fine Tuning”** button.



2.4 A tuning progress bar will appear for several seconds.



2.5 Click **“Apply settings and jam”** button after the tuning progress bar became disappeared.